

**Return this portion to the
Circulation Desk or mail to:**

Friends of the Jasper Public Library
c/o Jasper Public Library
100 3rd Ave. Suite B
Jasper, IN 47546



Name(s): _____

Address: _____

City, State, Zip: _____

Phone: _____

Email: _____

Annual Membership January through
December.

____ Adult \$10/year

____ Family \$25/year

____ Student \$5/year

____ Business/Organization \$25/year

____ Annual Supporter \$50/year (Participation
beyond the annual gift is optional).

____ I have enclosed an additional donation in the
amount of \$ _____

Checks should be made payable to:
Friends of the Jasper Public Library

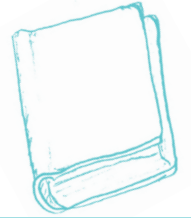


How can I participate or support the Library?

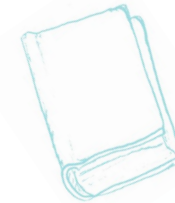
There are many ways to participate and
support the Jasper Public Library
as a Friends Member.

- ◆ Attend the scheduled Friends meetings.
- ◆ Assist in fundraising to benefit the Library.
- ◆ Volunteer to assist at special events.
- ◆ Solicit Donations of materials or funds for programs.
- ◆ Encourage others to participate in Library activities, events and programs.
- ◆ Be an active user of the Library and its many services.
- ◆ Provide your input and lend your talents in the development of successful programs.
- ◆ Follow and Share posts from the Library and the Friends on social media.

Friends of the Jasper Public Library
Jasper Public Library
100 3rd Ave. Suite B
Jasper, IN 47546
812-482-2712



**Friends
of the
Jasper Public
Library**





Friends of the Jasper Public Library

*- is an organization of patrons committed to expanding
and enriching the programs of the Library.*



Activities our organization supports include . . .

- ◆ Summer Reading programs, through soliciting of donations and gifts for programs and prizes.
- ◆ Keurig and coffee served at the Library programs and events.
- ◆ Fundraising activities such as the Book Sales , Food Events, Trivia Nights and more.
- ◆ Hospitality at events hosted at the Jasper Library.



Membership benefits include:

- ◆ Early bird specials on Book Sales and events.
- ◆ Discounts of 20% off fees for room rental at the Jasper Library.
- ◆ Community involvement.
- ◆ Shared experiences with Friends, Family, Co-workers and community members



What does it mean to belong to the Friends of Jasper Public Library?

It means that I will show my support for programs and events at the Library by:

- ◆ Volunteering
- ◆ Attending
- ◆ Contributing financially
- ◆ Spreading the word about programs and events offered at the Library.

How does the Friends support the Library?

The Library benefits when planning for the future of the Library and it's programs because of Friends:

- ◆ Input
- ◆ Support
- ◆ Outreach
- ◆ Volunteering

